

10

432 LM002B

LINE DE NANTES LA ROCHE S/ YON par S^{te} PASA

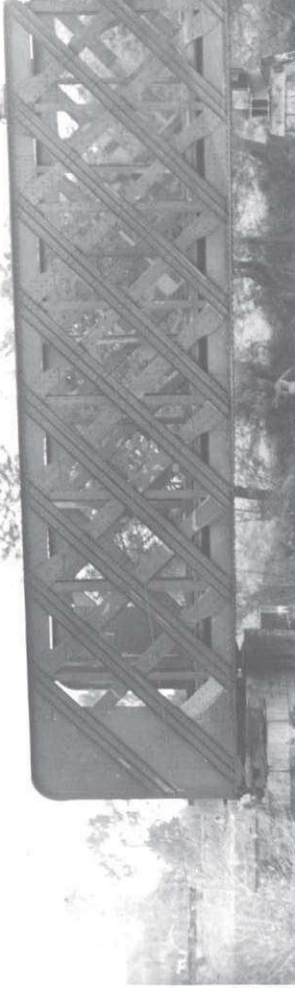
PONT SUR LE FALLERON

Au Km : 40 + 356

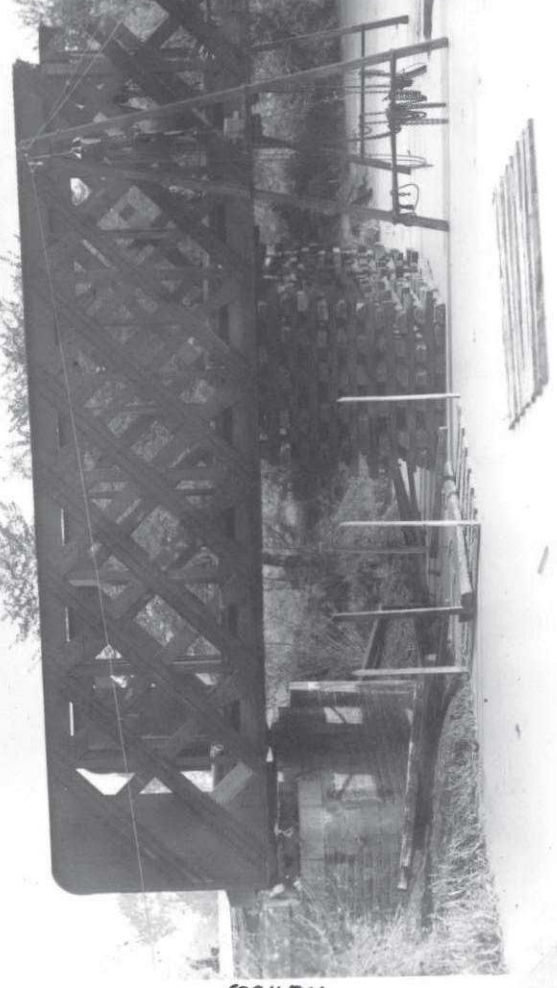
Reconstruction

APRÈS DESTRUCTION
DE 1944.

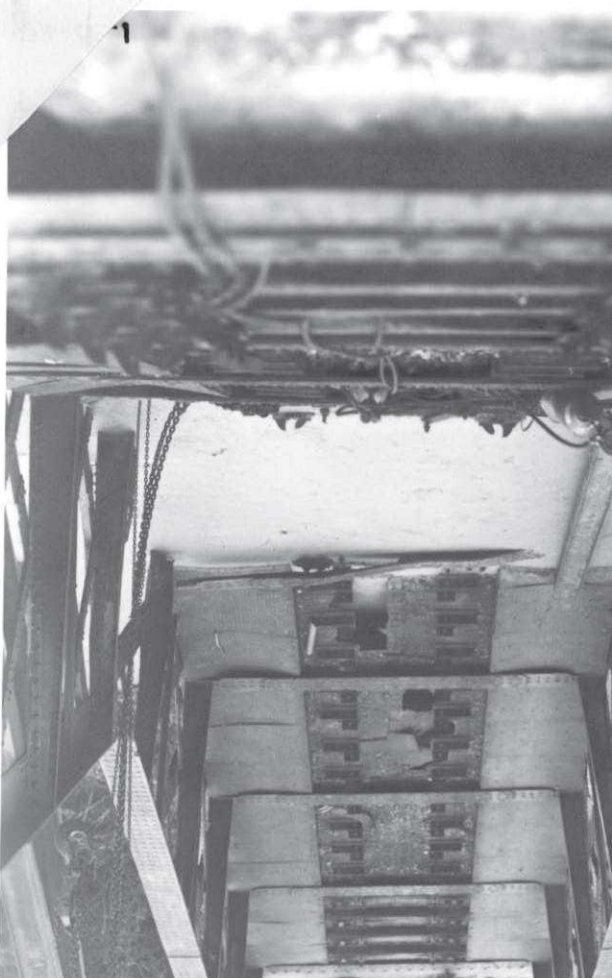
PHOTOGRAPHIES.



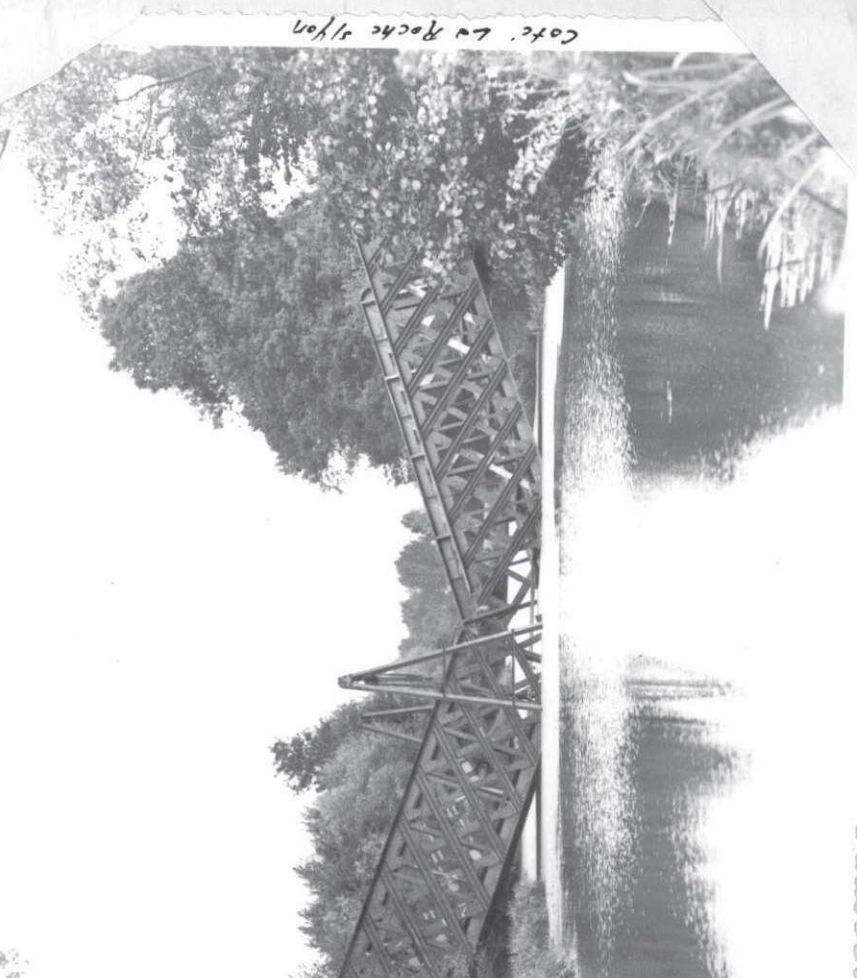
Nantes



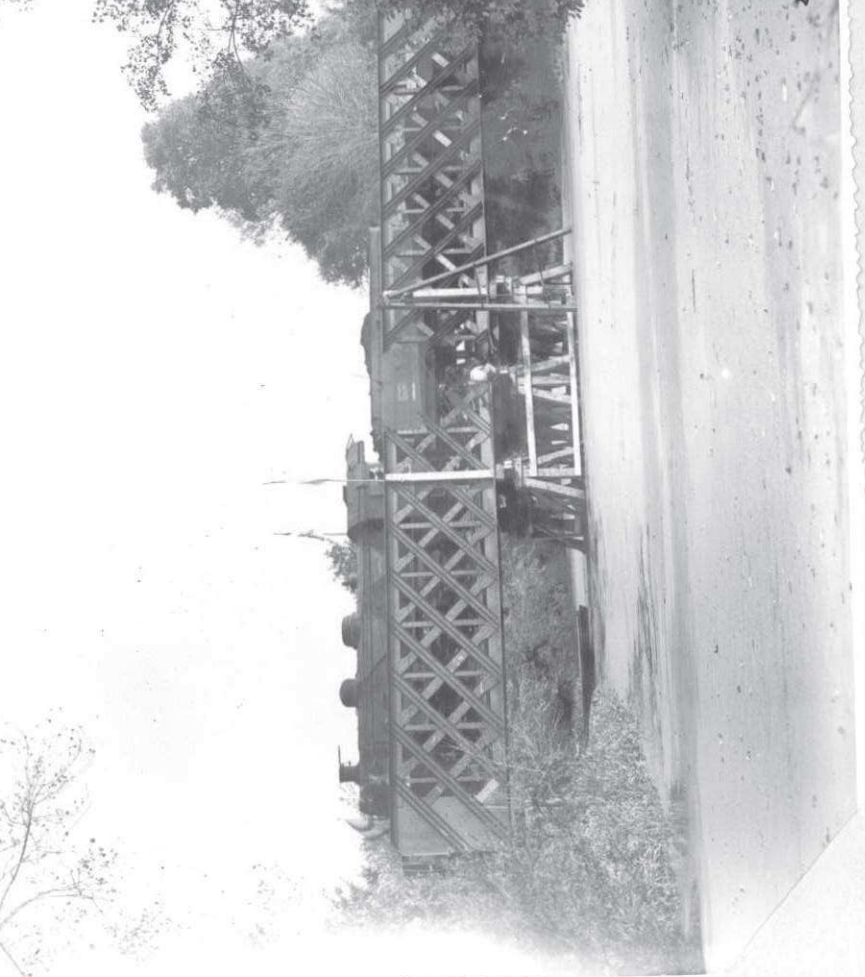
Nantes



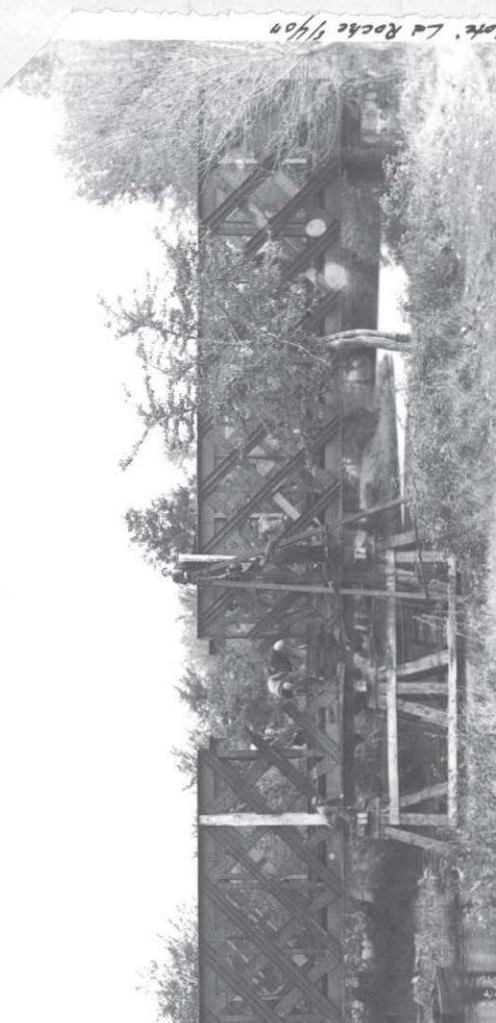
1



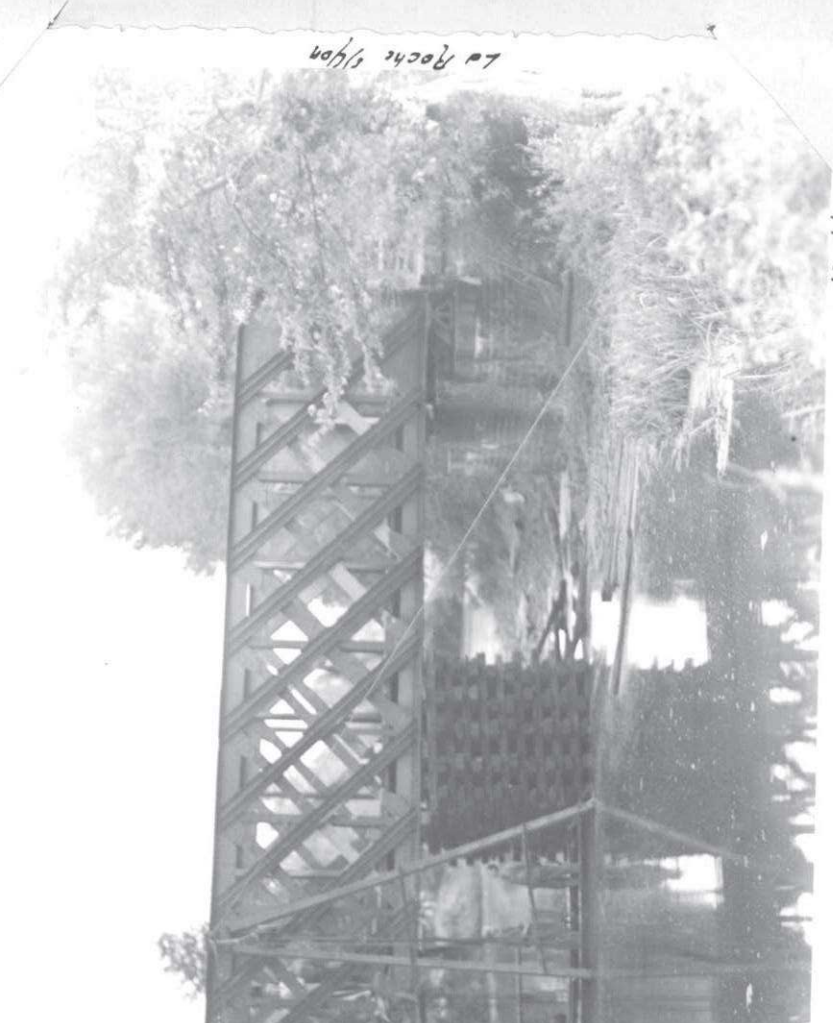
Cote La Roche s/yon



Cote' Nantes



Cote' La Roche Yvon



La Roche Yvon

44x01